

FREEHOLD



House - End Terrace

# 40 BROOKEND ROAD, SIDCUP, DA15 8BE

Offers in excess of

## £550,000

### FEATURES

- Three Bedroom End of Terrace Home
- Recently Renovated Throughout
- Stunning and Modern Kitchen/Dining Room
- NO FORWARD CHAIN
- Driveway To Front
- Good Size Rear Garden With Side Access
- Double Glazing and Gas Central Heating
- Internal Viewing Highly Recommended



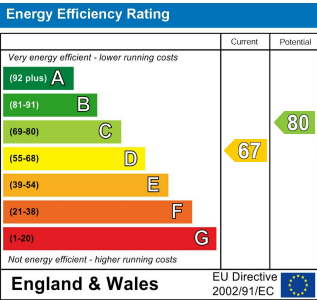
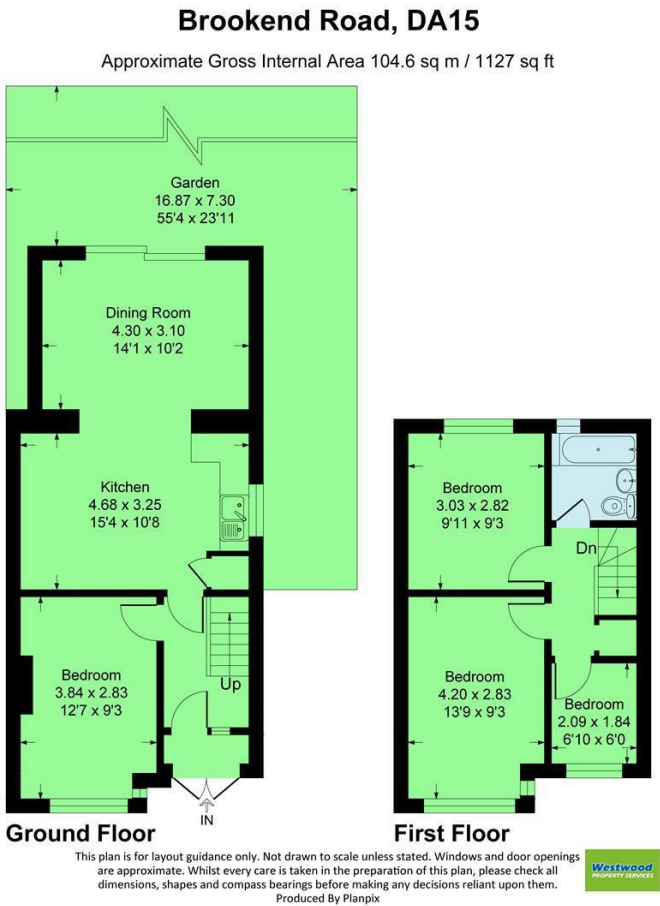
**Westwood**  
PROPERTY SERVICES

# 3 Bedroom House - End Terrace located in Sidcup

Located within a popular location close to both Sidcup and New Eltham Train Stations we are pleased to offer for sale this immaculately presented three bedroom end of terraced home. Having been thoughtfully renovated the accommodation on offer comprises entrance porch and hall, living room, extended open plan kitchen/dining room with a newly fitted kitchen, three family sized first floor bedrooms and a contemporary three piece bathroom. The rear garden benefits from side access and there is a generously sized driveway to the front for parking. Additional points of note include double glazing, gas central heating and no forward chain.

Call us on  
**020 8301 5511**  
[sales@westwoodpropertyservices.co.uk](mailto:sales@westwoodpropertyservices.co.uk)

**Council Tax Band**



Agents Note: Whilst every care has been taken to prepare these particulars, they are for guidance purposes only. All measurements are approximate and are for general guidance purposes only and whilst every care has been taken to ensure their accuracy, they should not be relied upon and potential buyers are advised to recheck the measurements.

